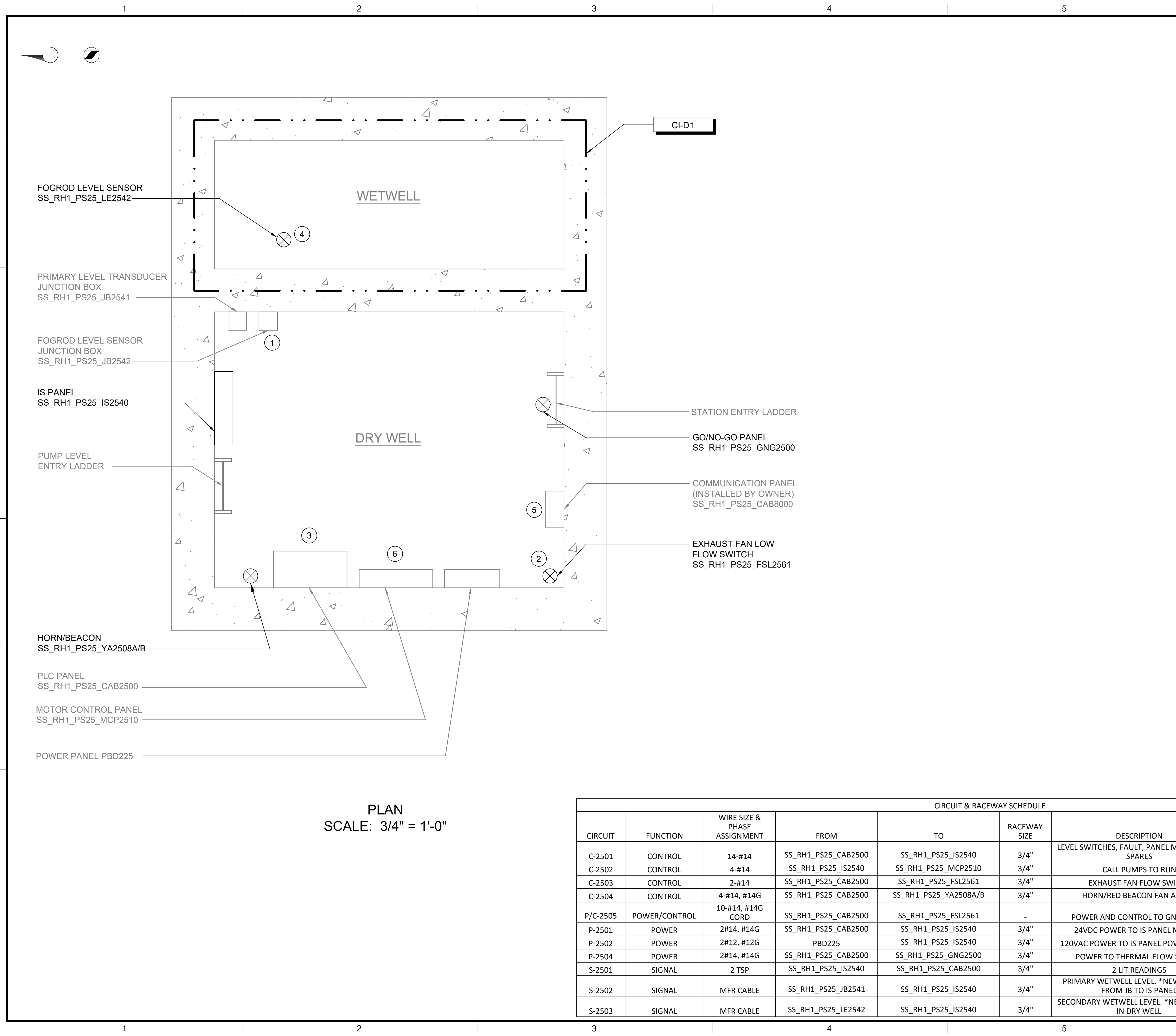


Path: C:\USERS\JACKSON\BPC\WID\1820948 FILENAME: I-25701.DWG PLOT DATE: 5/12/2022 9:54 AM CAD USER: DAN JACKSON



PLAN
SCALE: 3/4" = 1'-0"

CIRCUIT & RACEWAY SCHEDULE							
CIRCUIT	FUNCTION	WIRE SIZE & PHASE ASSIGNMENT	FROM	TO	RACEWAY SIZE	DESCRIPTION	LOCATION(S)
C-2501	CONTROL	14-#14	SS_RH1_PS25_CAB2500	SS_RH1_PS25_IS2540	3/4"	LEVEL SWITCHES, FAULT, PANEL MONITORING, SPARES	GRATING LEVEL
C-2502	CONTROL	4-#14	SS_RH1_PS25_IS2540	SS_RH1_PS25_MCP2510	3/4"	CALL PUMPS TO RUN	GRATING LEVEL
C-2503	CONTROL	2-#14	SS_RH1_PS25_CAB2500	SS_RH1_PS25_FSL2561	3/4"	EXHAUST FAN FLOW SWITCH	GRATING LEVEL
C-2504	CONTROL	4-#14, #14G	SS_RH1_PS25_CAB2500	SS_RH1_PS25_YA2508A/B	3/4"	HORN/RED BEACON FAN ALARM	GRATING LEVEL
P/C-2505	POWER/CONTROL	10-#14, #14G CORD	SS_RH1_PS25_CAB2500	SS_RH1_PS25_FSL2561	-	POWER AND CONTROL TO GNG PANEL	GRATING LEVEL
P-2501	POWER	2#14, #14G	SS_RH1_PS25_CAB2500	SS_RH1_PS25_IS2540	3/4"	24VDC POWER TO IS PANEL MODULE	GRATING LEVEL
P-2502	POWER	2#12, #12G	PBD225	SS_RH1_PS25_IS2540	3/4"	120VAC POWER TO IS PANEL POWER SUPPLY	GRATING LEVEL
P-2504	POWER	2#14, #14G	SS_RH1_PS25_CAB2500	SS_RH1_PS25_GNG2500	3/4"	POWER TO THERMAL FLOW SWITCH	GRATING LEVEL TO STATION HATCH DOOR
S-2501	SIGNAL	2 TSP	SS_RH1_PS25_IS2540	SS_RH1_PS25_CAB2500	3/4"	2 LIT READINGS	GRATING LEVEL
S-2502	SIGNAL	MFR CABLE	SS_RH1_PS25_JB2541	SS_RH1_PS25_IS2540	3/4"	PRIMARY WETWELL LEVEL. *NEW CONDUIT FROM JB TO IS PANEL	GRATING LEVEL
S-2503	SIGNAL	MFR CABLE	SS_RH1_PS25_LE2542	SS_RH1_PS25_IS2540	3/4"	SECONDARY WETWELL LEVEL. *NEW CONDUIT IN DRY WELL	GRATING LEVEL

GENERAL NOTES:

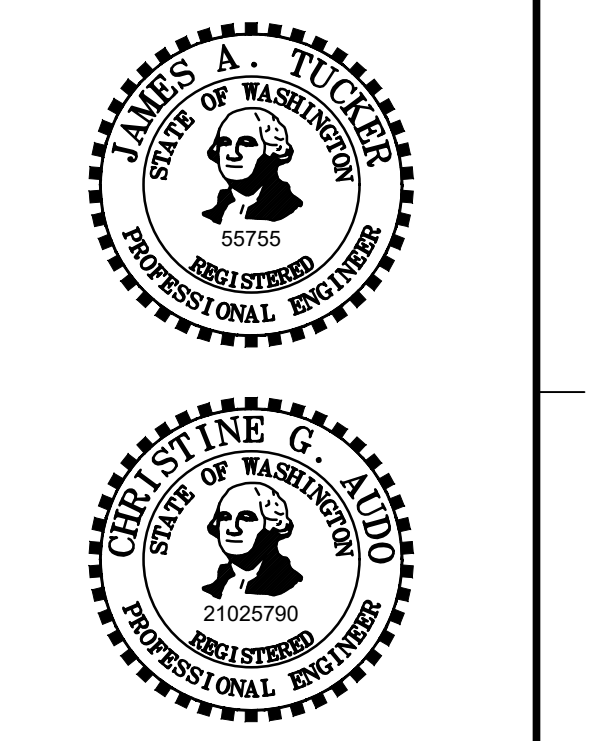
1. PLAN DRAWING IS PARTIAL REPRESENTATION OF THE SITE AND IS ONLY INTENDED TO PROVIDE DETAILS RELATED TO THE SCOPE OF THIS WORK.
2. REFERENCE AS-BUILT RECORD DRAWING BY CAREY & KRAMER CONSULTING ENGINEERS, DRAWING NUMBER 6223-M319.2, SHEET 20 OF 32 FOR ELEVATIONS RELATED TO WIRING AND CONDUIT.
3. REFER TO CIRCUIT & RACEWAY SCHEDULE ON THIS DRAWING FOR NEW WIRING AND CONDUIT WITHIN THE PUMP STATION.

KEY NOTES:

1. REFER TO SECTION 26 05 00 FOR CONDUIT SEALOFF REQUIREMENTS FROM CLASS I DIV 1 WETWELL.
2. REFER TO DWG I-00004 DETAIL C FOR THERMAL FLOW SWITCH INSTALLATION DETAIL ON EXISTING EXHAUST DUST.
3. REFER TO SECTION 26 05 00 FOR PLACING COMPRESSION FITTINGS ON EXISTING CONDUIT TO ROUTE TO NEW PANEL.
4. COORDINATE WITH OWNER ON FOGROD INSTALLATION LOCATION IN WETWELL.
5. LOCATION OF COMMUNICATION PANEL IS APPROXIMATE. COORDINATE WITH OWNER ON FINAL COMMUNICATION PANEL LOCATION.
6. CONTRACTOR TO PROVIDE NEW NAME PLATE FOR EXISTING MOTOR CONTROL PANEL AS "PUMP STATION 25 MOTOR CONTROL PANEL SS_RH1_PS25_MCP2510".



PERMIT ISSUE



**CITY OF MERCER ISLAND
SEWER SCADA SYSTEMS REPLACEMENT**

REVISIONS		
REV	DATE	DESCRIPTION

LINE IS 2 INCHES AT FULL SIZE

DESIGNED: CGA
DRAWN: DNW
CHECKED: LSL
CHECKED: LSL
APPROVED: CGA
FILENAME: I-25701.DWG
BC PROJECT NUMBER: 153585
CLIENT PROJECT NUMBER

**INSTRUMENTATION
PUMP STATION 25 - PLAN**

DRAWING NUMBER
I-25701
SHEET NUMBER
XX OF XX